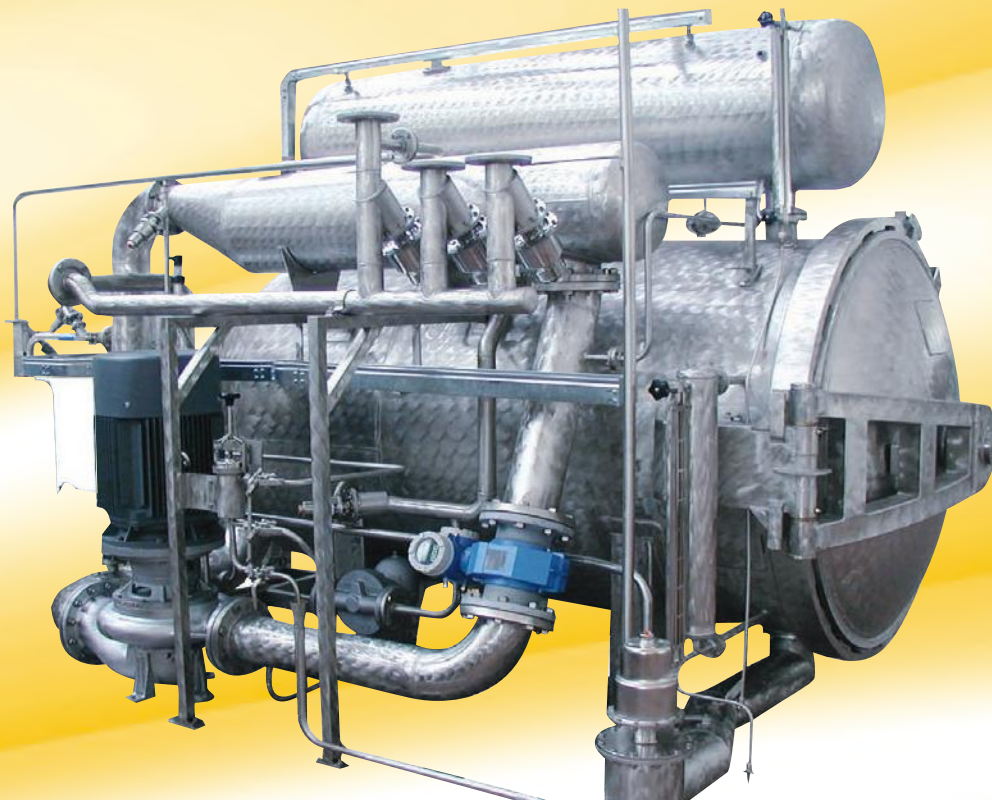




MCS

DYEING & FINISHING MACHINERY

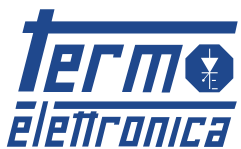
*Your ideal partner since 1963,
which means reliability, research and innovation.*



SILURO

BEAM DYEING MACHINE

OUR HISTORY



1963

Luigi Chiappini, Angelo Cagnazzo e Roberto Sopegno fundan MCS SpA. Luigi Chiappini será el presidente.

Luigi Chiappini, Angelo Cagnazzo e Roberto Sopegno founding MCS. Luigi Chiappini is the Chairman of the Board.

1964

MCS inicia sus actividades con la fabricación de accesorios para máquinas de tintura.

MCS begins its activity with the production of accessories for dyeing machines.

1967

MCS produce la prima máquina de cuerda con temperatura baja.

MCS manufactures the first low temperature rope dyeing machine.

1968

Inicio de las actividades de **Europizzi** tintorería y estampería productora de productos auxiliares del grupo MCS. *Europizzi begins its activity, dyeing, printing, producer of auxiliary products within MCS group.*

1971 ITMA - Paris

MCS expone el primer modelo de chorro con temperatura baja.

MCS exhibits the first low temperature jet model.

1974

MCS inicia el estudio diseño de las líneas al ancho.

MCS begins the design and development of the open width lines.

1979 ITMA - Hannover

MCS expone: Jet HT, Overflow MO/80 LT, MRS65.

MCS exhibits: Jet HT, Overflow MO/80 LT, MRS65.

1980

Inicio de las actividades de **Europea**, tintorería y resinado del grupo.

Europea activity begins, group dyeing and resining company.

1983 ITMA - Milan

MCS expone: mercerización tubular MT26, soft flow SF82 BT/HT, flow/jet OF83, Comby-

Jigger HT, línea de lavado en cuerda WR.

MCS exhibits: tubular mercerizer MT26, Soft Flow SF82 LT/HT, Flow/jet OF83, Comby Jigger HT, rope washing machine model WR.

1987 ITMA - Paris

MCS expone Pandora.

MCS exhibits Pandora.

1991 ITMA - Hannover,

MCS expone: Tornado Tumbler, Maxi & Mid Jiggers, Lavaprint.

MCS exhibits: Tornado Tumbler, Maxi & Mid Jiggers, Lavaprint.

1995 ITMA - Milan

MCS expone: Soft Flow, Long Horn, fabric wet sueding machine Pumex.

MCS exhibits: Soft Flow, Long Horn, fabric wet sueding machine Pumex.

1999 ITMA - Paris

MCS expone: Multiflow, Soft Flow Evolution SF100, Comby electronic Jigger.

MCS exhibits: Multiflow, Soft Flow Evolution SF100, Comby electronic Jigger.



MCS SpA è alla testa di un gruppo meccanico - tessile che inizia la propria attività agli inizi degli anni '60.

MCS SpA is the leader of a group of companies in the textile machinery industry, starting their activity at the beginning of the '60s.

IL GRUPPO MCS INCLUDE:

- **TERMOELETRONICA** che produce impianti per automazione industriale (dosaggi automatici) e sistemi di controllo.
- **EUROPIZZI**, tintoria, stamperia, finissaggio e produttrice di ausiliari chimici per industria tessile e non. La produzione giornaliera può raggiungere le 30 tonnellate di maglia e i 50.000 m di tessuto trama - catena.

Il catalogo MCS-Termoelettronica comprende:

- Macchine di tintura in corda a alta e bassa temperatura
- Macchine di tintura in largo (Jigger ed autoclavi) a alta e bassa temperatura
- Sistemi di controllo processo
- Linee di preparazione e lavaggio in corda
- Linee in largo per mercerizzo, candeggio e lavaggio per tessuti a maglia e ortogonali
- Impianti per dosaggio ausiliari chimici
- Impianti per dosaggio polveri per tintorie-stamperie
- Impianti per dosaggio sale
- Sistemi SW di automazione

MCS GROUP INCLUDES:

- *Termoelettronica manufacturer of industrial automation systems (automatic dosing) and control systems.*
- *Europizzi, dye-house, printing-house, finishing and producer of chemical auxiliaries for the textile industry and other application fields. Daily production at Europizzi is 30 tons of knits and 50.000 metres of woven fabrics.*

The catalogue of MCS-Termoelettronica machines includes:

- *Rope dyeing machines at high and atmospheric temperature*
- *Open-width dyeing machines (jiggers and beam dyers) at high and atmospheric temperature*
- *Systems for process control*
- *Preparation and washing ranges in rope form*
- *Open-width ranges for mercerising, bleaching and washing of knitted and woven fabrics*
- *Dosing systems for chemical auxiliaries*
- *Dosing systems of powders for dye-house and printing-house*
- *Dosing systems for salt*
- *SW systems for automation*

2000

MCS acquisisce il 100% della proprietà di **Termoelettronica**.

MCS acquires 100% of Termoelettronica ownership.

2003 ITMA - Birmingham

MCS espone: Multiflow Superior, Ecoturbo Beam Dyeing Machine.

MCS exhibits: Multiflow Superior, Ecoturbo Beam Dyeing Machine.

2005 IKME - Milan

Prototipo della Universal Dyeing e della VDA.

Prototypes of Universal Dyeing and of the VDA.

2007 ITMA - Munich

MCS espone: Universal Dyeing, First Vento, Tumbler Mistral, sistemi di controllo di processo Coltex e VDA.

MCS exhibits: Universal Dyeing, First Vento, Tumbler Mistral, process control systems Coltex and VDA.

2008

Reingegnerizzazione di tutti i modelli dei Jigger

ad alta e a bassa temperatura.

Redesigning of all high and low temperature Jigger models.

2009

Lancio e commercializzazione macchina di tintura in corda orizzontale Italiana.

Presentation and sale of orizzontal rope dyeing machine model Italiana.

2011 ITMA - Barcelona

MCS espone: Dynamica, Star Wash, Comby Jigger, Supervisor Texmanager.

MCS exhibits: Dynamica, Star Wash, Comby Jigger, Supervisor Texmanager.

2013

MCS festeggia i 50 anni di attività con l'avviamento della sua più grande linea di preparazione in aperto mai costruita (purga, lavaggio, candeggio) e con il lancio della Smartflow.

MCS celebrate their 50th anniversary by starting the biggest open-width preparation line in their history (scouring-bleaching-washing) and by introducing the new HT round dyeing machine, Smartflow.

2014 ITMA - Shanghai

MCS espone l'evoluzione della vasca di purga e lavaggio Starwash.

MCS exhibits evolution of Starwash washing range, ideal for scouring and after print washing.

2015 ITMA - Milan

MCS espone: Multiwash, Dynamica Sprint, Starwash FS.

Termoelettronica espone: Termopowder XP, Texmanager XP, Termochem XP.

MCS exhibits: Multiwash, Dynamica Sprint, Starwash FS.

Termoelettronica exhibits: Termopowder XP, Texmanager XP, Termochem XP.

2019 ITMA - Barcelona

MCS espone: Lavaprint Next (Starwash + Multiwash), Dynamica Sprint, Mini Jigger 98

MCS presenta: C4 Comby Jigger 143; Softflow 18-HT.

Termoelettronica espone: Termochem XP, Texmanager.

MCS exhibits: Lavaprint Next (Starwash + Multiwash), Dynamica Sprint, Mini Jigger 98

MCS introduces: C4 Comby Jigger 143; Softflow 18-HT.

Termoelettronica exhibits: Termochem XP, Texmanager.

SILURO

HT BEAM DYEING MACHINE

La macchina di tintura in largo su subbio ad alta temperatura è di comune e largo impiego nel settore, e tuttora è resa attuale ed affidabile dalla MCS.

Propone un vasto programma di modelli in linea con le esigenze tecnologiche e produttive dei nostri giorni.

SILURO permette di tingere articoli di tessuto sintetico, di 100% Pes e 100% PA, di maglieria rettilinea con cachemire di AC/PA; oppure 100% PA ma anche articoli di COT/PES; pizzo di PA 100%; maglieria elastica di PA/Lycra etc...

The beam dyer for open width dyeing at high temperature is widely used in the textile industry. MCS can offer an up-dated and reliable machine in a wide range of models according to different technologic and production needs.

*A big variety of articles can be dyed in **SILURO** machine synthetic fabrics 100% PES and 100% PA, warp-knits such as cashmere AC/PA or 100% PA, COT/PES articles, 100% PA lace, PA/LYCRA elastic knits, etc.*

TECNICAL DATA

- Rapporto bagno minimo 1:5
 - Subbio semplice e/o gemellato di diverso diametro
 - Vaso di espansione aperto (o chiuso pressurizzato)
 - Riscaldamento indiretto.
 - Controllo automatico della pressione della pompa
 - Regolazione completamente automatica con PC industriale PCx-TEx, by Termoelettronica
 - Predisposizione con cucina colori centralizzata
 - Sistema di dosaggio d'alcali
 - Sistema scarico bagno rapido modelo MQD
 - 2° serbatoio d'aggiunta prodotti completo di mixer
- *Minimum liquor ratio 1:5*
 - *Single and/or double beams of different diameter*
 - *Expansion tank, open or pressurised*
 - *Heating by steam, diathermic oil or overheated water, through an external heat-exchanger*
 - *Pump pressure with automatic control inside/outside*
 - *Micro touch-screen by Termoelettronica model PCx-TEx*
 - *Pre-arrangement for computerised dyestuff-kitchen*
 - *Product dosing system.*
 - *Drain by main pump, mod. MQD*
 - *2nd side tank for products, with pneumatic level probes and mixer*

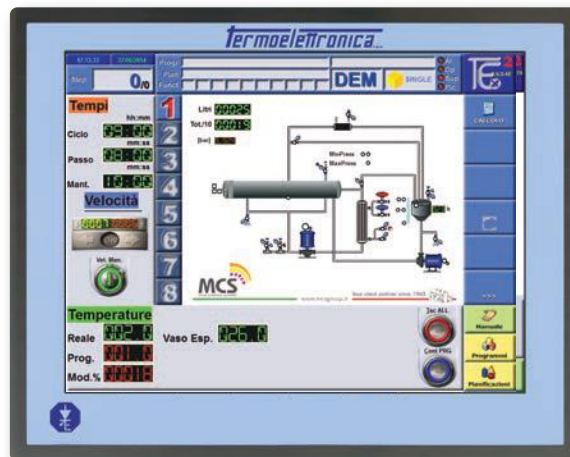
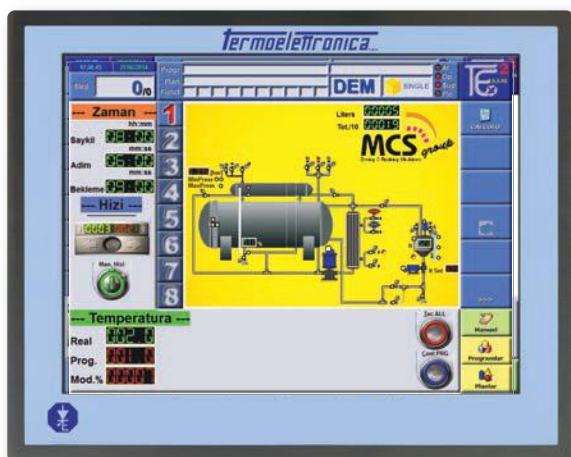


Add Tanks



Big production machines

STANDARD AUTOMATION



PCx: PC industriale sviluppato in ambiente windows per implementare in modo avanzato tutte le funzionalità diagnostiche, di monitoraggio e di automazione delle macchine di tintura. Grazie allo schermo tattile touch-screen, progettato espressamente per l'impiego industriale, ogni funzionalità risulta di facile ed immediato accesso.

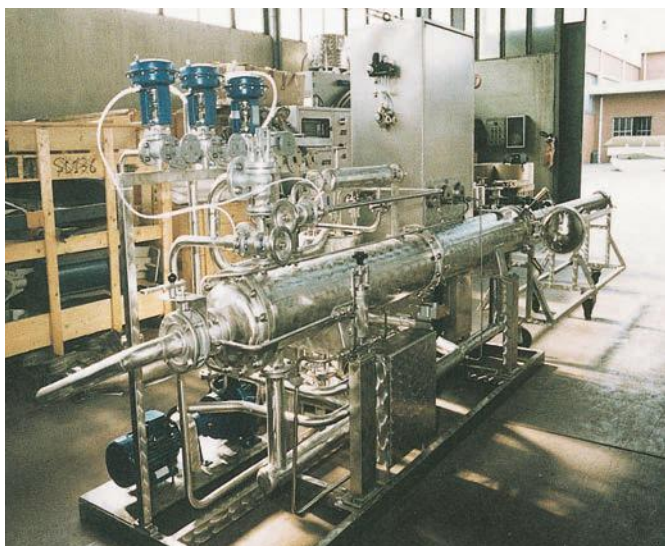
A richiesta è possibile l'impiego di qualsiasi micro disponibile sul mercato.

PCx: industrial PC developed in Windows room to improve all diagnostic functions, monitoring and automation of dyeing machines.

With Touch-Screen, purposely designed for industrial use, the access to functions is easy and immediate.

Upon Customer's request it is always possible to install different brands of controllers.

tecnologia MCS



Sample machine

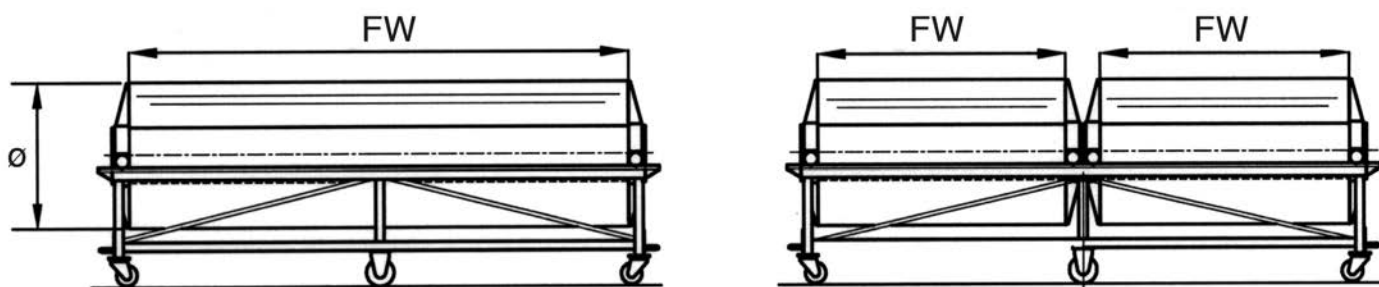
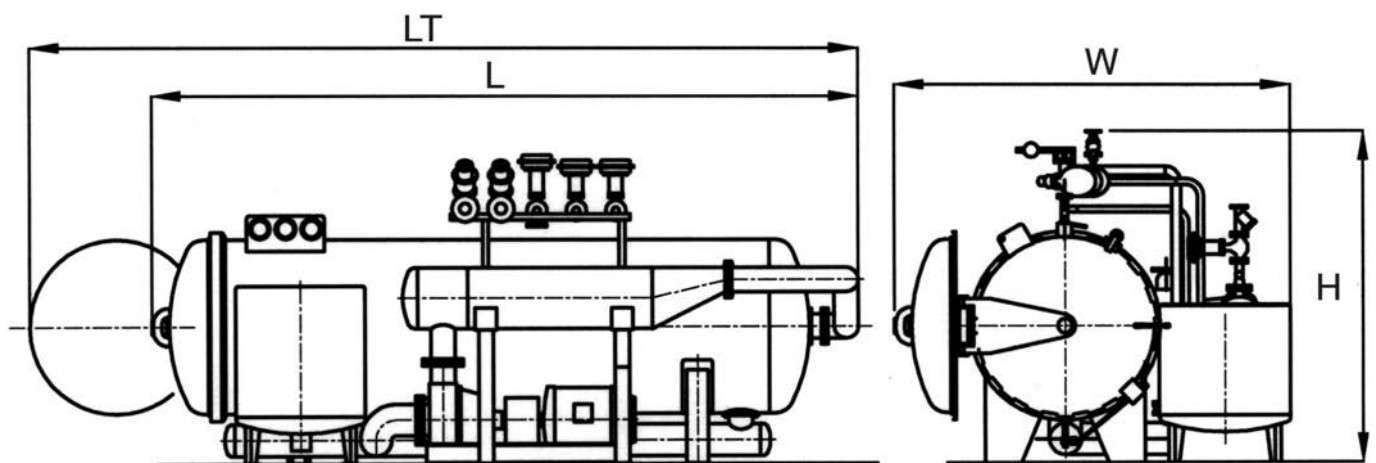


MCS technology

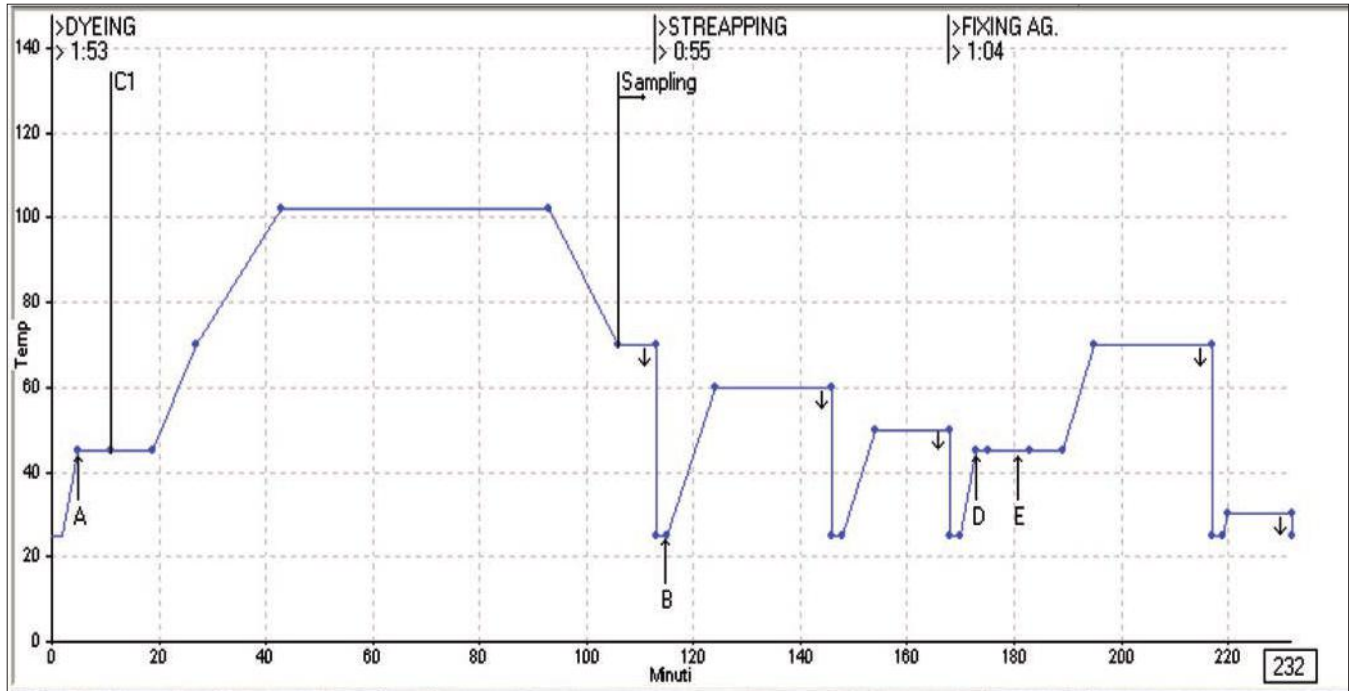
REAL
MADE IN
ITALY

MODELS DATA

Beam Dyer HT 143°	AT 08/273	AT 09/650	AT 10/856	AT 11/1027	AT 12/1200	AT 13/1400	AT 14/1600
FW [mm]	1600; 1800; 2000; 2200; 3200; 4200	1600; 1800; 2000; 2200; 3200; 4200	1600; 1800; 2000; 2200; 3200; 4200	1600; 1800; 2000; 2200; 3200; 4200	1600; 1800; 2000; 2200; 3200; 4200	1600; 1800; 2000; 2200; 3200; 4200	1600; 1800; 2000; 2200; 3200; 4200
Beam \varnothing [mm]	200	530	740	910	1080	1280	1490
W [mm]	1200	1900	2200	2400	2750	3000	3500
H [mm]	1800	2000	2000	2000	2500	2500	2850
L [mm]	3000	3350	3550	3650	3900	4000	4100
LT [mm]	3300	3750	4100	4500	4700	4900	5200



DYEING REPORT



MCS reserve the right to change technical data and specifications without prior notice.

FABRIC FEATURES AT14-4200 (Double Beam)	
Article	KNITTED FABRIC
Composition	80% PA 20% LY
Colour	BLACK
Weight [gr/m]	280
Weight [gr/m ²]	180
Width [cm]	155
Lot [Kg]	1020
Lot [m]	3640
Preparation	Pre Setting
Finishing	Stenter
Remarks	=

MACHINE REGULATION AT14-4200 (Double Beam)	
Delivery regul. circul. pump	1050
Internal pressure [bar]	4,2
External pressure [bar]	3,1
Thickness [mm]	34
Beam diametre [mm]	600
Liquor ratio [l/Kg]	6,2
First filling [l]	6400
Next. fillings [l]	5100

RESULTS	
Water consum. [l]	26800
Water per kg fabric [l/kg]	26,27
Steam consum. [Kgs]	2885
Steam fabric [Kgs/Kg]	2,82
Energy kg fabric [Kw/Kg]	0,105
Real time [1']	232
Program N.	00-362

DYESTUFF	
C	Acid Dyestuff

AUXILIARES	
A	Levelling agent + Buffer
B	Sodium Hydrosulfite + Soda ASH
D	Acetic Acid
E	Fixing Ag.

Please take note that technical data may be changed by MCS spa to improve the quality of the offered product.



FEEL THE POWER OF WATER

DYEING & FINISHING MACHINERY



MCS

Bergamo | Italy | mcstextile.it