

# MCS

DYEING & FINISHING MACHINERY



# CHRONO FLOW-i

HT ROPE DYEING MACHINE



# OUR HISTORY

DYEING & FINISHING MACHINERY

**MCS**

MCS & TERMO INNOVATION ZONE

**BLUE**  
AREA

COMMISSION ECO-DYEHOUSE

**EUROPIZZI**

AUTOMATION & SOFTWARE

**Termo**  
elettronica



[mcsgroup.it](http://mcsgroup.it)  
Bergamo - Italy

member of  
**AGIAT**  
ITALIAN TEXTILE MACHINERY

MCS spa, since 1963, develops, manufactures and installs discontinuous dyeing machines and washing & preparation lines

## 2023 ITMA - Milan

### MCS exhibits:

- Multiwash-M,
- Comby Jigger-C4,
- Chronoflow,
- Softflow-18

## 2019 ITMA - Barcellona

### MCS exhibits:

- Lavaprint Next,
- Dynamica Sprint,
- Mini Jigger 98,

### MCS presents:

- C4 Comby Jigger 143;
- Softflow 18-HT.

## 2017

### MCS presents:

- Mini Jigger 98.

## 2015 ITMA - Milan

### MCS exhibits:

- Multiwash,
- Dynamica Sprint,
- Starwash FS,
- Termopowder XP,
- Texmanager XP,
- Termochem XP.

## 2014 ITMA - Shanghai

### MCS exhibits:

- Starwash Fast Scouring.

## 2013

MCS celebrate their 50 th anniversary

## 2011 ITMA - Barcellona

### MCS exhibits:

- Dynamica,
- Star Wash,
- Comby Jigger,
- Supervisor Texmanager.

## 2009

### MCS presents:

- Italica.

## 2008

MCS Re-design of all high and low temperature Jigger models.

## 2007 ITMA - Munich

### MCS exhibits:

- Universal Dyeing,
- First Vento,
- Tumbler Mistral,
- VDA.

## 2005 IKME - Milan

### MCS exhibits:

- Universal Dyeng, VDA.

## 2003 ITMA - Birmingham

### MCS exhibits:

- Multiflow Superior,
- Ecoturbo Beam Dyeing Machine.

## 2000

MCS acquires 100% of Termoelettronica owner-ship.

## 1999 ITMA - Paris

### MCS exhibits:

- Multiflow,
- Softflow 100 Evolution,
- Comby jigger electronic.

## 1995 ITMA - Milan

### MCS exhibits:

- Softflow,
- Long Horn,
- Pumex

## 1991 ITMA - Hannover

### MCS exhibits:

- Tornado Tumbler,
- Maxi & Mid jiggers,
- Lavaprint.

## 1987 ITMA - Paris

### MCS exhibits: Pandora.

## 1983 ITMA - Milan

### MCS exhibits:

- Tubular mercerizer MT26,
- Softflow-82 LT/HT,
- Flow/jet OF83,
- Comby Jigger HT,
- WR rope washing machine.

## 1980

Europea activity begins, group dyeing and resining company.

## 1979 ITMA - Hannover

### MCS exhibits:

- Jet HT,
- Overflow MO/80 LT,
- MRS65.

## 1974

MCS begins the design and development of the open width lines.

## 1971 ITMA - Paris

### MCS exhibits:

MCS exhibits the first low temperature jet model.

## 1968

Europizzi begins its activity

## 1967

MCS manufactures the first low temperature rope dyeing machine.

## 1964

MCS begins its activity.

## 1963

Gino Chiappini, Angelo Cagnazzo, founding MCS. Gino Chiappini is the Chairman of the Board.



# CHRONOFLOW-i

## HT ROPE DYEING MACHINE

**Chronoflow-i** è una macchina per la tintura in corda in alta temperatura (max 144°C).

Con questo progetto ci siamo focalizzati sulla riduzione dei tempi di ciclo, sull'affidabilità estrema, facilità manutentiva e risparmi energetici.

È una macchina a deposito circolare, idonea per tessuti sia a maglia che ortogonali a grammature variabili.

Per articoli di pesi particolarmente leggeri è possibile lavorare in corda doppia o multipla.

Il corpo macchina può contenere da una a sei vasche, con capacità di carica variabile a seconda del modello e dalla versione prescelta.

Considerando una fibra cellulosica a maglia con peso di 250 g/lin.m, le capacità di carica sono quelle indicate in tabella a pag. 6.

Tutte le parti interne della macchina in contatto con il tessuto sono costruite impiegando acciaio inossidabile AISI 316/AISI 316 L. certificato.

**Chronoflow-i** è interamente ingegnerizzata e costruita in MCS.

Ogni nuovo modello viene testato ed esposto, in INNOVATIVE BLUE AREA integrato nella tintoria del gruppo MCS.

**Chronoflow-i** is a high temperature rope dyeing machine (max 144°C).

With this project we focused on reduction on cycle times, extreme reliability, ease of maintenance and energy savings.

It is a circular deposit machine, suitable for both knitted and orthogonal fabrics with variable weights.

For particularly light weight items, it is possible to work in double or multiple rope.

The machine body contains from one to six trough, with variable charge capacity depending on the model and the chosen version.

Considering a knitted cellulosic fiber with a weight of 250 g/lin.m, the charge capacities are those indicated in the table on page 6.

All the internal parts of the machine in contact with the fabric are built using certified stainless steel AISI 316/AISI 316 L.

**Chronoflow-i** is entirely engineered and built in MCS.

Each new model is tested and exhibited, in INNOVATIVE BLUE AREA integrated in the MCS Group dyeing plant.

### STORIA DELLE MACHINE DA TINTURA IN CORDA MCS

1967 ITMA - **Parigi**: MCS espone il primo modello di jet a bassa temperatura.

1979 ITMA - **Hannover**: MCS espone JET-HT e OVERFLOW MO/80 LT

1983 ITMA - **Milano**: MCS espone SOFTFLOW 82 HT e FLO-JET OF83 HT

1987 ITMA - **Parigi**: MCS espone PANDORA HT

1995 ITMA - **Milano**: MCS espone SOFTFLOW 100 HT, LONG HORN HT.

1999 ITMA - **Parigi**: MCS espone MULTIFLOW HT, SOFTFLOW 100 SUPERIOR HT

2000: MCS presenta la EUROFLOW LONG

2003 ITMA - **Birmingham**: MCS espone: MULTIFLOW SUPERIOR.

2007 ITMA - **Monaco**: MCS espone FIRST HT

2011 ITMA - **Barcellona**: MCS espone DYNAMICA HT

2015 ITMA - **Milano**: MCS espone DYNAMICA SPRINT HT

2019 ITMA - **Barcellona**: MCS presenta SOFTFLOW 18 HT, espone DYNAMICA SPRINT HT

2020: MCS Progetta EUROFLOW SPORT

2023: ITMA Milano: MCS Espone CHRONOFLOW e SOFTFLOW 18 HT

### ROPE DYEING MACHINE HISTORY

1967 ITMA - **Paris**: MCS exhibits: the first low temperature jet model.

1979 ITMA - **Hannover**: MCS exhibits JET-HT and OVERFLOW MO/80 LT

1983 ITMA - **Milan**: MCS exhibits SOFTFLOW 82 HT and FLO-JET OF83 HT

1987 ITMA - **Paris**: MCS exhibits PANDORA HT

1995 ITMA - **Milan**: MCS exhibits: SOFTFLOW 100 HT, LONG HORN HT.

1999 ITMA - **Paris**: MCS exhibits: MULTIFLOW HT, SOFTFLOW 100 SUPERIOR HT

2000 : MCS presents the EUROFLOW LONG

2003 ITMA - **Birmingham**: MCS exhibits: MULTIFLOW SUPERIOR.

2007 ITMA - **Monaco**: MCS exhibits FIRST HT

2011 ITMA - **Barcelona**: MCS exhibits DYNAMICA HT

2015 ITMA - **Milan**: MCS exhibits DYNAMICA SPRINT HT

2019 ITMA - **Barcelona**: MCS presents SOFTFLOW 18 HT, exhibits DYNAMICA SPRINT HT

2020 : MCS design the EUROFLOW SPORT

2023 ITMA Milano: MCS exhibits CHRONOFLOW and SOFTFLOW 18 HT

# CHRONOFLOW-i

## HT ROPE DYEING MACHINE



### Dotazione macchina

**Pompa di circolazione principale**, centrifuga ad alte prestazioni con sistema multiaspirante.

**Sistema di controllo pressione** ugello e circolazione bagno tramite programmatore dedicato.

**Ugello fisso intercambiabile**, disponibile in varie misure adeguate ad ogni esigenza tintoriale.

Pannello operatore touch-screen da 15" modello **CONTROL-DYE-15"** by **TERMOELETTRONICA** (a richiesta altri pannelli operatori).

**Serbatoio prodotti**, con sonda pneumatica di livello, serpentina di riscaldamento, miscelatore e filtro conico.

Lavaggio pareti **SPIRAL WASHING** ad alta efficienza.

Filtro autopulente statico **SSCF** in mandata pompa.

Sistema di scarico mediante pompa principale **MQD**.

**Faldatore** interno (uno per vasca) per una migliore disposizione e circolazione del tessuto.

**Aspo esterno maggiorato** e a ridotto slittamento.

**Scambiatore di calore principale** efficientato per riduzione dei tempi di riscaldamento e raffreddamento.

**Quadro elettrico e canaline di cablaggio** completamente in Inox

Serbatoio di preparazione del bagno **MST** con sistema di controllo/gestione di livello, serpentina di riscaldamento e pompa di ricircolo. (**Optional** a richiesta).

### Machine equipment

**Main circulation pump**, high-performance centrifuge with multi-suction system;

Nozzle pressure and liquor **circulation control system** through dedicated programmer;

**Interchangeable fixed nozzle**, available in different sizes suitable for every dyeing requirement;

Touch-screen 15" operator panel model **CTRL-DYE** by **TERMOELETTRONICA** (other operator panels on request);

**Products tank**, with pneumatic level probe, heating coil, mixer and conical filter;

High efficiency **SPIRAL WASHING** for wall washing;

Static self-cleaning filter **SSCF** on pump delivery

Discharge system by main pump **MQD**;

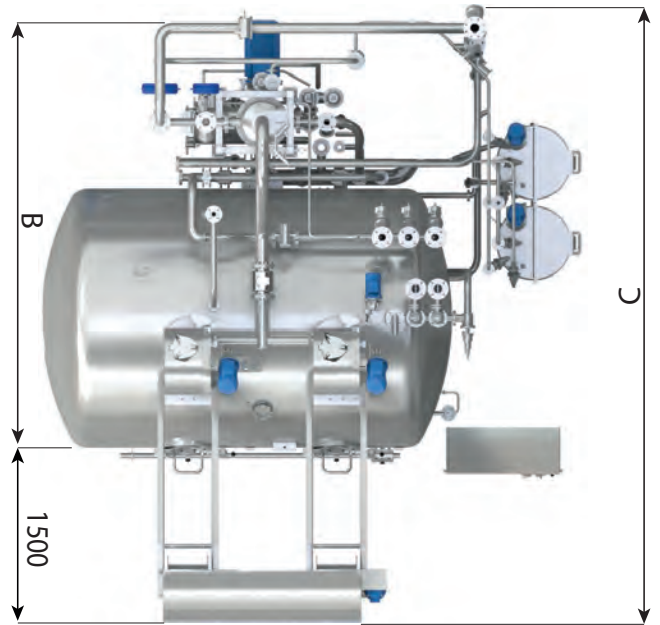
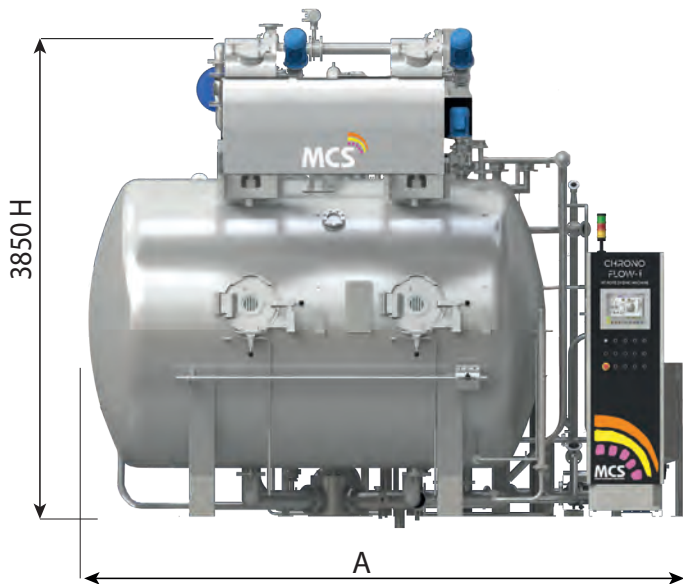
**Internal plaiters** (one per tank) for better arrangement and circulation of the fabric;

**Increased external reel** with reduced slippage;

**Efficient main heat exchanger** for reduction of heating and cooling times;

**Electrical panel and wiring ducts** completely in stainless steel

**MST bath preparation tank** with level control/management system, heating coil and recirculation pump; (**Optional at request**).



**NOMINAL  
CAPACITY  
GUARANTEED**

**LIQUOR RATIO  
1+FABRIC ABSORPTION**

Loading capacity mentioned in this table may slightly vary depending on the type of article considered.

**WE REMAIN AVAILABLE FOR ANY TECHNICAL INFORMATION**

MCS reserve the right to change technical data and specifications without prior notice.

	Loading [Kg]	Ropes [n]	A [mm]	B [mm]	C [mm]	H [mm]
CRFi-1J	200	1	3.100	3.500	5.000	3.970
CRFi-2J	400	2	4.250	4.100	5.600	3.700
CRFi-3J	600	3	5.300	4.200	5.700	3.800
CRFi-4J	800	4	6.450	4.200	5.700	3.970
CRFi-6J	1.000	6	8.500	4.500	6.000	4.150

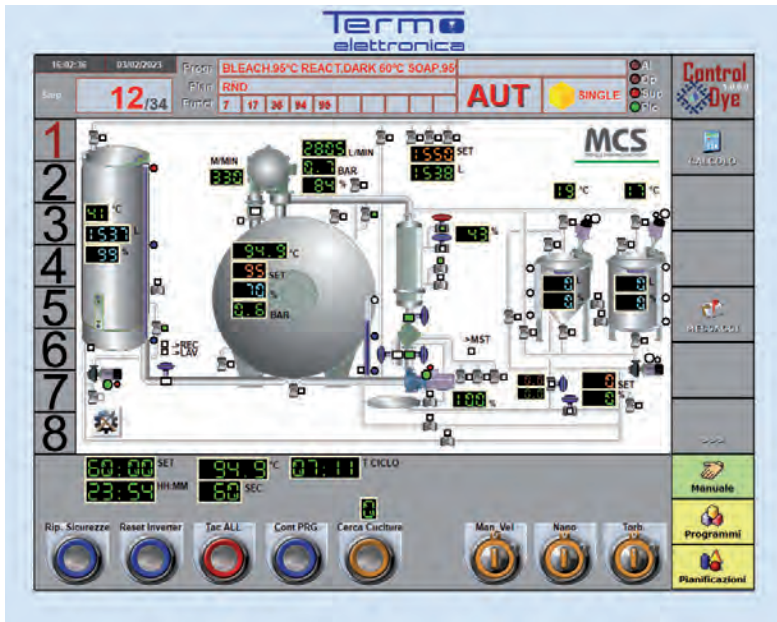
	Loading [Kg]	Ropes [n]	A [mm]	B [mm]	C [mm]	H [mm]
CRFi-1XJ	250	1	3.300	3.500	5.000	3.970
CRFi-2XJ	500	2	4.700	4.100	5.600	3.700
CRFi-3XJ	750	3	6.000	4.200	5.700	3.970
CRFi-4XJ	1.000	4	7.300	4.500	6.000	3.970
CRFi-6XJ	1.500	6	10.000	4.500	6.000	4.150

	Loading [Kg]	Ropes [n]	A [mm]	B [mm]	C [mm]	H [mm]
CRFi-1XXJ	300	1	3.500	3.500	5.000	3.970
CRFi-2XXJ	600	2	5.100	4.100	5.600	3.700
CRFi-3XXJ	900	3	6.600	4.200	5.700	3.970
CRFi-4XXJ	1.200	4	8.200	4.500	6.000	3.970
CRFi-6XXJ	1.800	6	11.300	4.500	6.000	4.150

	Loading [Kg]	Ropes [n]	A [mm]	B [mm]	C [mm]	H [mm]
CRFi-SJ	300	1	2.900	3.500	5.000	3.970

# CHRONO-AUTOMATION

## CTRL-DYE



Pannello operatore sviluppato in ambiente windows per implementare in modo avanzato tutte le funzionalità diagnostiche, di monitoraggio e di automazione delle macchine di tintura.

Schermo tattile touch-screen da 15", progettato espressamente per l'impiego industriale, ogni funzionalità risulta di facile ed immediato accesso.

A richiesta è possibile l'impiego di qualsiasi micro disponibile sul mercato.

*Operatiron Panel developed in Windows room to improve all diagnostic functions, monitoring and automation of dyeing machines.*

*With Touch-Screen 15", purposely designed for industrial use, the access to functions is easy and immediate.*

*Upon Customer's request it is always possible to install different brands of controllers.*

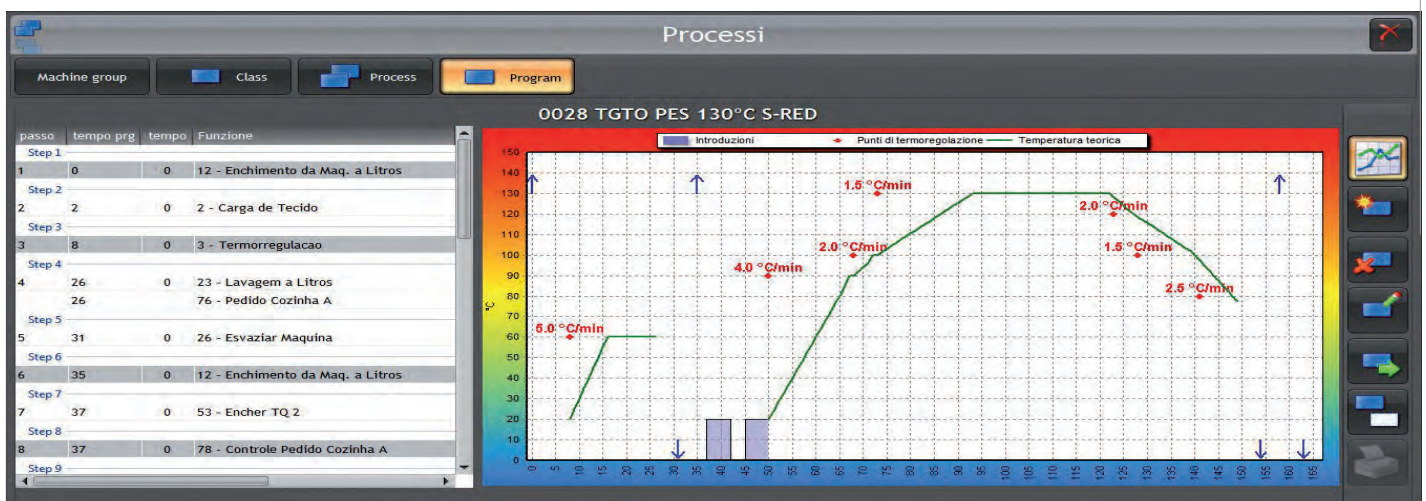
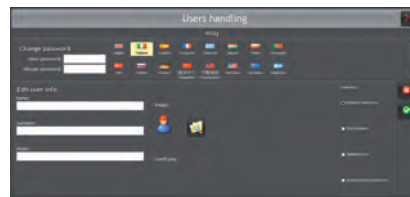
## TEXMANAGER 4.0

Software integrato per la gestione della produzione che include:

- Gestione del personale
- Ottimizzazione delle risorse umane
- Gestione dei macchinari
- Gestione Reparti produttivi
- Gestione Magazzino

*Integrated production management software including:*

- Personnel Management*
- Optimization of human resources*
- Management of machinery*
- Software for integrated Production Management*
- Management of production departments*
- Warehouse management*





# FEEL THE POWER OF WATER

DYEING & FINISHING MACHINERY



**MCS**

Bergamo | Italy | [mcstextile.it](http://mcstextile.it)



THINK BEFORE YOU PRINT