

MCS

DYEING & FINISHING MACHINERY



CHRONOFLOW

HT ROPE DYEING MACHINE



OUR HISTORY

DYEING & FINISHING MACHINERY

MCS

MCS & TERMO INNOVATION ZONE

BLUE
AREA

COMMISSION ECO-DYEHOUSE

EUROPIZZI

AUTOMATION & SOFTWARE

Termo
elettronica



mcsgroup.it
Bergamo - Italy

member of
AGIAT
ITALIAN TEXTILE MACHINERY

MCS spa, since 1963, develops, manufactures and installs discontinuous dyeing machines and washing & preparation lines

2023 ITMA - Milan

MCS exhibits:

- Multiwash-M,
- Comby Jigger-C4,
- Chronoflow,
- Softflow-18

2019 ITMA - Barcellona

MCS exhibits:

- Lavaprint Next,
- Dynamica Sprint,
- Mini Jigger 98,

MCS presents:

- C4 Comby Jigger 143;
- Softflow 18-HT.

2017

MCS presents:

- Mini Jigger 98.

2015 ITMA - Milan

MCS exhibits:

- Multiwash,
- Dynamica Sprint,
- Starwash FS,
- Termpowder XP,
- Texmanager XP,
- Termochem XP.

2014 ITMA - Shanghai

MCS exhibits:

- Starwash Fast Scouring.

2013

MCS celebrate their 50 th anniversary

2011 ITMA - Barcellona

MCS exhibits:

- Dynamica,
- Star Wash,
- Comby Jigger,
- Supervisor Texmanager.

2009

MCS presents:

- Italica.

2008

MCS Re-design of all high and low temperature Jigger models.

2007 ITMA - Munich

MCS exhibits:

- Universal Dyeing,
- First Vento,
- Tumbler Mistral,
- VDA.

2005 IKME - Milan

MCS exhibits:

- Universal Dyeng, VDA.

2003 ITMA - Birmingham

MCS exhibits:

- Multiflow Superior,
- Ecoturbo Beam Dyeing Machine.

2000

MCS acquires 100% of Ter-moelettronica owner-ship.

1999 ITMA - Paris

MCS exhibits:

- Multiflow,
- Softflow 100 Evolution,
- Comby jigger electronic.

1995 ITMA - Milan

MCS exhibits:

- Softflow,
- Long Horn,
- Pumex

1991 ITMA - Hannover

MCS exhibits:

- Tornado Tumbler,
- Maxi & Mid jiggers,
- Lavaprint.

1987 ITMA - Paris

MCS exhibits: Pandora.

1983 ITMA - Milan

MCS exhibits:

- Tubular mercerizer MT26,
- Softflow-82 LT/HT,
- Flow/jet OF83,
- Comby Jigger HT,
- WR rope washing machine.

1980

Europea activity begins, group dyeing and resining company.

1979 ITMA - Hannover

MCS exhibits:

- Jet HT,
- Overflow MO/80 LT,
- MRS65.

1974

MCS begins the design and development of the open width lines.

1971 ITMA - Paris

MCS exhibits:

MCS exhibits the first low temperature jet model.

1968

Europizzi begins its activity

1967

MCS manufactures the first low temperature rope dyeing machine.

1964

MCS begins its activity.

1963

Gino Chiappini, Angelo Cagnazzo, founding MCS. Gino Chiappini is the Chairman of the Board.



CHRONOFLOW

HT ROPE DYEING MACHINE

Chronoflow è una macchina per la tintura in corda in alta temperatura (max 144°C).

Con questo progetto ci siamo focalizzati sulla riduzione dei tempi di ciclo, sull'affidabilità estrema, facilità manutentiva e risparmi energetici.

È una macchina a deposito circolare, idonea per tessuti sia a maglia che ortogonali a grammature variabili.

Per articoli di pesi particolarmente leggeri è possibile lavorare in corda doppia o multipla.

Il corpo macchina può contenere da una a sei vasche, con capacità di carica variabile a seconda del modello e dalla versione prescelta.

Considerando una fibra cellulosica a maglia con peso di 250 g/lin.m, le capacità di carica sono quelle indicate in tabella a pag. 6.

Tutte le parti interne della macchina in contatto con il tessuto sono costruite impiegando acciaio inossidabile AISI 316/AISI 316 L. certificato.

Chronoflow è interamente ingegnerizzata e costruita in MCS.

Ogni nuovo modello viene testato ed esposto, in INNOVATIVE BLUE AREA integrato nella tintoria del gruppo MCS.

***Chronoflow** is a high temperature rope dyeing machine (max 144°C).*

With this project we focused on reduction on cycle times, extreme reliability, ease of maintenance and energy savings.

It is a circular deposit machine, suitable for both knitted and orthogonal fabrics with variable weights.

For particularly light weight items, it is possible to work in double or multiple rope.

The machine body contains from one to six trough, with variable charge capacity depending on the model and the chosen version.

Considering a knitted cellulosic fiber with a weight of 250 g/lin.m, the charge capacities are those indicated in the table on page 6.

All the internal parts of the machine in contact with the fabric are built using certified stainless steel AISI 316/AISI 316 L.

***Chronoflow** is entirely engineered and built in MCS.*

Each new model is tested and exhibited, in INNOVATIVE BLUE AREA integrated in the MCS Group dyeing plant.

STORIA DELLE MACHINE DA TINTURA IN CORDA MCS

1967 ITMA - Parigi: MCS espone il primo modello di jet a bassa temperatura.

1979 ITMA - Hannover: MCS espone JET-HT e OVERFLOW MO/80 LT

1983 ITMA - Milano: MCS espone SOFTFLOW 82 HT e FLO-JET OF83 HT

1987 ITMA - Parigi: MCS espone PANDORA HT

1995 ITMA - Milano: MCS espone SOFTFLOW 100 HT, LONG HORN HT.

1999 ITMA - Parigi: MCS espone MULTIFLOW HT, SOFTFLOW 100 SUPERIOR HT

2000: MCS presenta la EUROFLOW LONG

2003 ITMA - Birmingham: MCS espone: MULTIFLOW SUPERIOR.

2007 ITMA - Monaco: MCS espone FIRST HT

2011 ITMA - Barcellona: MCS espone DYNAMICA HT

2015 ITMA - Milano: MCS espone DYNAMICA SPRINT HT

2019 ITMA - Barcellona: MCS presenta SOFTFLOW 18 HT, espone DYNAMICA SPRINT HT

2020: MCS Progetta EUROFLOW SPORT

2023: ITMA Milano: MCS Espone CHRONOFLOW e SOFTFLOW 18 HT

ROPE DYEING MACHINE HISTORY

1967 ITMA - Paris: MCS exhibits: the first low temperature jet model.

1979 ITMA - Hannover: MCS exhibits JET-HT and OVERFLOW MO/80 LT

1983 ITMA - Milan: MCS exhibits SOFTFLOW 82 HT and FLO-JET OF83 HT

1987 ITMA - Paris: MCS exhibits PANDORA HT

1995 ITMA - Milan: MCS exhibits: SOFTFLOW 100 HT, LONG HORN HT.

1999 ITMA - Paris: MCS exhibits: MULTIFLOW HT, SOFTFLOW 100 SUPERIOR HT

2000 : MCS presents the EUROFLOW LONG

2003 ITMA - Birmingham: MCS exhibits: MULTIFLOW SUPERIOR.

2007 ITMA - Monaco: MCS exhibits FIRST HT

2011 ITMA - Barcelona: MCS exhibits DYNAMICA HT

2015 ITMA - Milan: MCS exhibits DYNAMICA SPRINT HT

2019 ITMA - Barcelona: MCS presents SOFTFLOW 18 HT, exhibits DYNAMICA SPRINT HT

2020 : MCS design the EUROFLOW SPORT

2023 ITMA Milan: MCS exhibits CHRONOFLOW and SOFTFLOW 18 HT

CHRONOFLOW

HT ROPE DYEING MACHINE



The image in figure is to be considered full optional

Dotazione standard

Pompa di circolazione principale, centrifuga ad alte prestazioni con sistema multiaspirante.

Sistema di controllo pressione ugello e circolazione bagno tramite programmatore dedicato.

Ugello fisso intercambiabile, disponibile in varie misure adeguate ad ogni esigenza tintoriale.

Pannello operatore touch-screen da 15" modello **CONTROL-DYE-15** " by **TERMOELETRONICA** (a richiesta altri pannelli operatori).

Serbatoio prodotti, con sonda pneumatica di livello, serpentina di riscaldamento, miscelatore e filtro conico.

Lavaggio pareti **SPIRAL WASHING** ad alta efficienza.

Filtro autopulente statico **SCSF** in mandata pompa.

Sistema di scarico mediante pompa principale **MQD**.

Introduzione prodotti **MINI FUSION** con sistema di prediluizione delle dosate.

Faldatore interno (uno per vasca) per una migliore disposizione e circolazione del tessuto.

Aspo esterno maggiorato e a ridotto slittamento.

Scambiatore di calore principale efficientato per riduzione dei tempi di riscaldamento e raffreddamento.

Quadro elettrico e canaline di cablaggio completamente in Inox.

Standard equipment

Main circulation pump, high-performance centrifuge with multi-suction system;

Nozzle pressure and liquor circulation control system through dedicated programmer;

Interchangeable fixed nozzle, available in different sizes suitable for every dyeing requirement;

Touch-screen 15" operator panel model **CTRL-DYE** by **TERMOELETRONICA** (other operator panels on request);

Products tank, with pneumatic level probe, heating coil, mixer and conical filter;

High efficiency SPIRAL WASHING for wall washing;

Static self-cleaning filter SCSF on pump delivery

Discharge system by main pump **MQD**;

Introduction of MINI FUSION products with dose pre-dilution system;

Internal plaiters (one per tank) for better arrangement and circulation of the fabric;

Increased external reel with reduced slippage;

Efficient main heat exchanger for reduction of heating and cooling times;

Electrical panel and wiring ducts completely in stainless steel.

-30% RUN-TIME

CHRONOFLOW

The image in figure is to be considered full optional



Accessori a richiesta

Serbatoio di preparazione del bagno **MST** con sistema di controllo/gestione di livello, serpentina di riscaldamento e pompa di ricircolo.

Serbatoio dedicato sale e alcali, con sonda pneumatica di livello, serpentina di riscaldamento, miscelatore e fresa specifica per la dissoluzione rapida.

SINGLE LYE: pompa aggiuntiva dosaggio alkali che permette il dosaggio prodotti presenti nei serbatoi, in due fasi distinte, programmabili separatamente.

Gruppo torretta con apertura laterale di facile accesso per sostituzione ugelli e manutenzione.

RCR: Recuperatore di calore dedicato per la riduzione del consumo di vapore.

Controlli di pH, conducibilità, turbidità e misuratori di consumi energetici

Aspo di scarico per singola corda

Sistema di separatore corde doppia o multipla

Optional at request

MST bath preparation tank with level control/management system, heating coil and recirculation pump;

Dedicated salt and alkali tank, with pneumatic level probe, heating coil, mixer and specific cutter for rapid dissolution;

SINGLE LYE: Additional pneumatic product dosing pump for alkali. Ideal for dosing chemicals, available in the side tanks, in two distinct phases that can be programmed separately.

Turret unit with easy access side opening for nozzle replacement and maintenance;

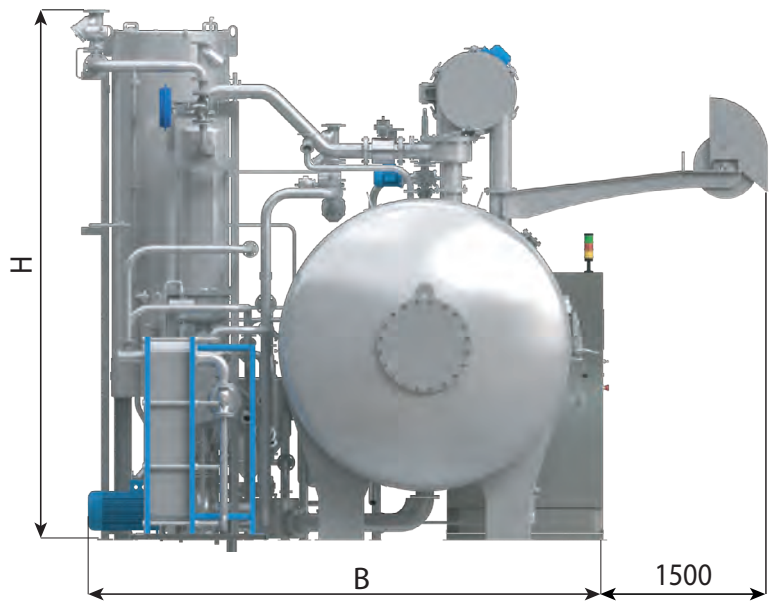
RCR: Heat recovery heat exchanger dedicated to the reduction of steam consumption

Controls for pH, conductivity, turbidity and energy consumption.

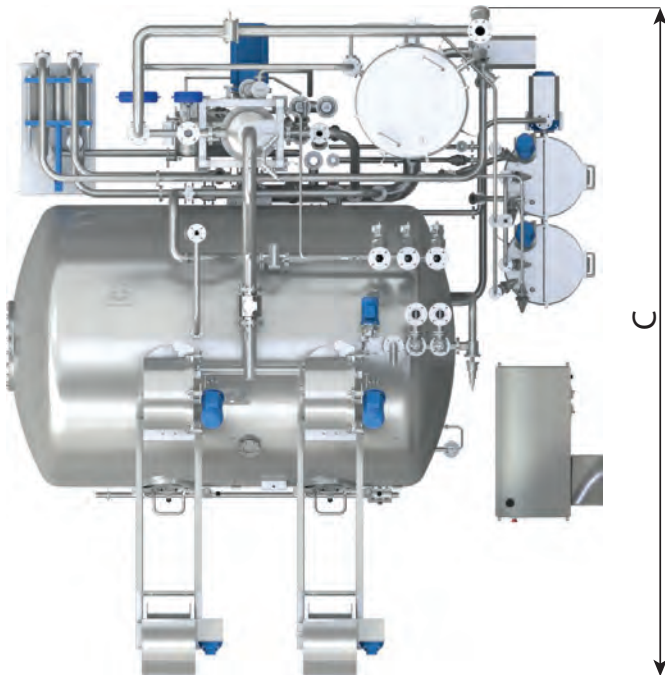
Single external smart reels

Double or multiple rope separator system

MODELS DATA



NOMINAL CAPACITY GUARANTEED



	Loading [Kg]	Ropes [n]	A [mm]	A+RCR [mm]	B [mm]	C [mm]	H [mm]
CRF-1J	200	1	3.100	3.850	3.500	5.000	3.970
CRF-2J	400	2	4.250	4.600	4.100	5.600	3.700
CRF-3J	600	3	5.300	5.500	4.200	5.700	3.800
CRF-4J	800	4	6.450	6.450	4.200	5.700	3.970
CRF-6J	1.000	6	8.500	8.500	4.500	6.000	4.150

	Loading [Kg]	Ropes [n]	A [mm]	A+RCR [mm]	B [mm]	C [mm]	H [mm]
CRF-1XJ	250	1	3.300	3.850	3.500	5.000	3.970
CRF-2XJ	500	2	4.700	4.600	4.100	5.600	3.700
CRF-3XJ	750	3	6.000	5.500	4.200	5.700	3.970
CRF-4XJ	1.000	4	7.300	6.450	4.500	6.000	3.970
CRF-6XJ	1.500	6	10.000	8.500	4.500	6.000	4.150

	Loading [Kg]	Ropes [n]	A [mm]	A+RCR [mm]	B [mm]	C [mm]	H [mm]
CRF-1XXJ	300	1	3.500	4.200	3.500	5.000	3.970
CRF-2XXJ	600	2	5.100	5.100	4.100	5.600	3.700
CRF-3XXJ	900	3	6.600	6.600	4.200	5.700	3.970
CRF-4XXJ	1.200	4	8.200	8.200	4.500	6.000	3.970
CRF-6XXJ	1.800	6	11.300	11.300	4.500	6.000	4.150

	Loading [Kg]	Ropes [n]	A [mm]	A+RCR [mm]	B [mm]	C [mm]	H [mm]
CFR-SJ	300	1	2.900	3.750	3.500	5.000	3.970

Loading capacity mentioned in this table may slightly vary depending on the type of article considered.

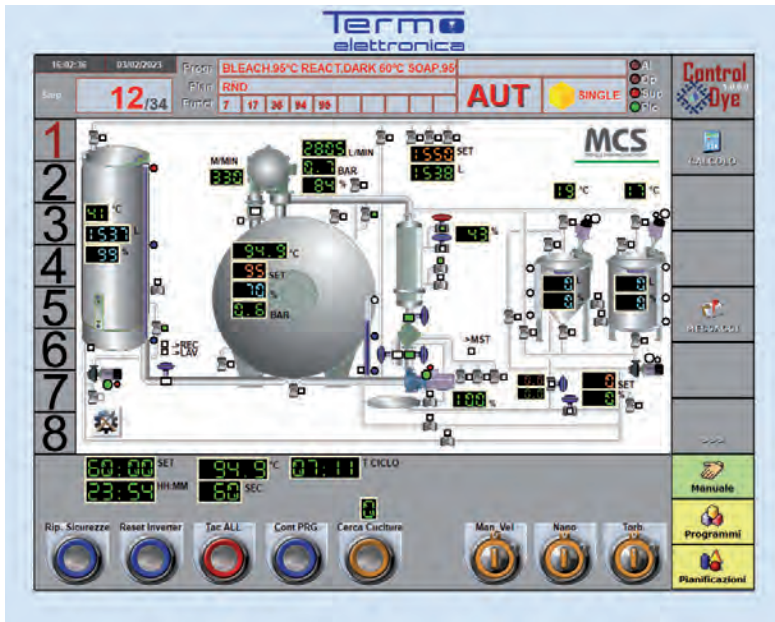
MCS reserve the right to change technical data and specifications without prior notice.

**LIQUOR RATIO
1+FABRIC ABSORPTION**

WE REMAIN AVAILABLE FOR ANY TECHNICAL INFORMATION

CHRONO-AUTOMATION

CTRL-DYE



Pannello operatore sviluppato in ambiente windows per implementare in modo avanzato tutte le funzionalità diagnostiche, di monitoraggio e di automazione delle macchine di tintura.

Schermo tattile touch-screen da 15", progettato espressamente per l'impiego industriale, ogni funzionalità risulta di facile ed immediato accesso.

A richiesta è possibile l'impiego di qualsiasi micro disponibile sul mercato.

Operatior Panel developed in Windows room to improve all diagnostic functions, monitoring and automation of dyeing machines.

With Touch-Screen 15", purposely designed for industrial use, the access to functions is easy and immediate.

Upon Customer's request it is always possible to install different brands of controllers.

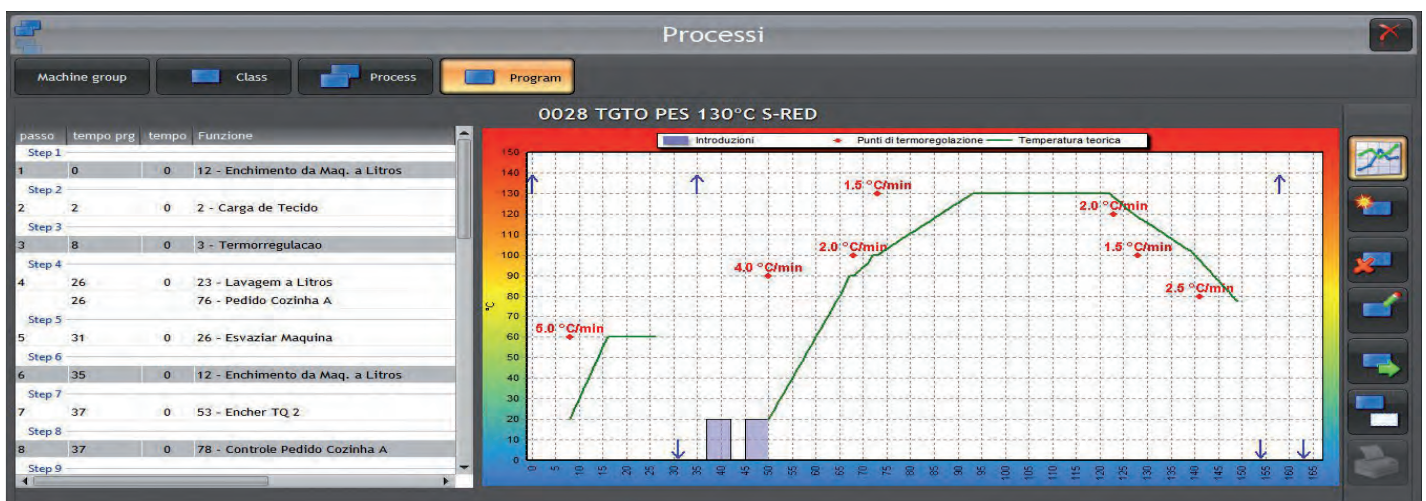
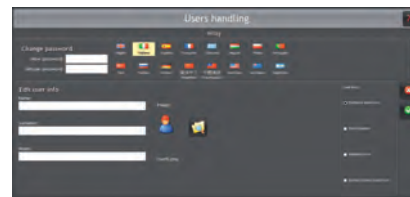
TEXMANAGER 4.0

Software integrato per la gestione della produzione che include:

- Gestione del personale
- Ottimizzazione delle risorse umane
- Gestione dei macchinari
- Gestione Reparti produttivi
- Gestione Magazzino

Integrated production management software including:

- Personnel Management*
- Optimization of human resources*
- Management of machinery*
- Software for integrated Production Management*
- Management of production departments*
- Warehouse management*



FEEL THE POWER OF WATER

DYEING & FINISHING MACHINERY



MCS

Bergamo | Italy | mcstextile.it



THINK BEFORE YOU PRINT