

MCS

DYEING & FINISHING MACHINERY



SOFTFLOW 18

HORIZONTAL HT & LT ROPE DYEING MACHINE



OUR HISTORY



2023 ITMA - Milan

MCS exhibits:

- Multiwash-M,
- Comby Jigger-C4,
- Chronoflow,
- Softflow-18

2019 ITMA - Barcellona

MCS exhibits:

- Lavaprint Next,
- Dynamica Sprint,
- Mini Jigger 98,

MCS presents:

- C4 Comby Jigger 143;
- Softflow 18-HT.

2017

MCS presents:

- Mini Jigger 98.

2015 ITMA - Milan

MCS exhibits:

- Multiwash,
- Dynamica Sprint,
- Starwash FS,
- Termopowder XP,
- Texmanager XP,
- Termochem XP.

2014 ITMA - Shanghai

MCS exhibits:

- Starwash Fast Scouring.

2013

MCS celebrate their 50 th anniversary

2011 ITMA - Barcellona

MCS exhibits:

- Dynamica,
- Star Wash,
- Comby Jigger,
- Supervisor Texmanager.

2009

MCS presents:

- Italice.

2008

MCS Re-design of all high and low temperature Jigger models.

2007 ITMA - Munich

MCS exhibits:

- Universal Dyeing,
- First Vento,
- Tumbler Mistral,
- VDA.

2005 IKME - Milan

MCS exhibits:

- Universal Dyeng, VDA.

2003 ITMA - Birmingham

MCS exhibits:

- Multiflow Superior,
- Ecoturbo Beam Dyeing Machine.

2000

MCS acquires 100% of Ter-moelettronica owner-ship.

1999 ITMA - Paris

MCS exhibits:

- Multiflow,
- Softflow 100 Evolution,
- Comby jigger electronic.

1995 ITMA - Milan

MCS exhibits:

- Softflow,
- Long Horn,
- Pumex

1991 ITMA - Hannover

MCS exhibits:

- Tornado Tumbler,
- Maxi & Mid jiggers,
- Lavaprint.

1987 ITMA - Paris

MCS exhibits: Pandora.

1983 ITMA - Milan

MCS exhibits:

- Tubular mercerizer MT26,
- Softflow-82 LT/HT,
- Flow/jet OF83,
- Comby Jigger HT,
- WR rope washing machine.

1980

Europea activity begins, group dyeing and resining company.

1979 ITMA - Hannover

MCS exhibits:

- Jet HT,
- Overflow MO/80 LT,
- MRS65.

1974

MCS begins the design and development of the open width lines.

1971 ITMA - Paris

MCS exhibits:

MCS exhibits the first low temperature jet model.

1968

Europizzi begins its activity

1967

MCS manufactures the first low temperature rope dyeing machine.

1964

MCS begins its activity.

1963

Gino Chiappini, Angelo Cagnazzo, founding MCS. Gino Chiappini is the Chairman of the Board.



SOFTFLOW-18

HT ROPE DYEING MACHINE

Softflow-18 é uma máquina de tingimento de corda de alta temperatura (max 144 °F).

É uma máquina de depósito horizontal, adequada para tecidos de malha e planos com pesos variáveis, mesmo os mais delicados, graças ao uso de sistemas de controle avançados. O corpo da câmara pode conter de um a três vasos diferentes com capacidade de carga variável, dependendo do modelo e da versão escolhida.

Considerando uma malha de fibra celulósica com um peso de 250 g/m.lin. , as capacidades de enchimento são as indicadas na tabela na pag. 6

Todas as peças internas da máquina em contato com o tecido são construídas usando aço inoxidável certificado AISI 316/ AISI 316 L. .

O Softflow-18 é totalmente projetado e construído em MCS e testado na MCS Blue R&D

Softflow-18 is a high temperature rope dyeing machine (max 144 °F).

It is a horizontal depositing machine, suitable for both knitted and orthogonal fabrics with variable weights even the most delicate, thanks to the use of advanced control systems. The camera body can contain from one to three different vessels with variable charging capacity depending on the model and the version chosen.

Considering a cellulosic fibre mesh with a weight of 250 g/lin. m, the filling capacities are those indicated in the table on p. 6

All internal parts of the machine in contact with the fabric are constructed using AISI 316/AISI 316 L. certified stainless steel.

Softflow-18 is fully engineered and built in MCS and tested in the Blue R&D area of MCS.

HISTÓRIA DAS MÁQUINAS DE TINGIMENTO EM CORDA MCS

1967 ITMA - Paris: MCS expõe o primeiro modelo de jato de baixa temperatura

1979 ITMA - Hannover: MCS expõe JET-HT e OVERFLOW MO/80 LT

1983 ITMA - Milão: MCS expõe SOFTFLOW 82 HT e FLO-JET OF83 HT

1987 ITMA - Paris: MCS expõe PANDORA HT

1995 ITMA - Milão: MCS expõe SOFTFLOW 100 HT, LONG HORN HT.

1999 ITMA - Paris: MCS expõe MULTIFLOW HT, SOFTFLOW 100 SUPERIOR HT

2000: MCS apresenta la EUROFLOW LONG

2003 ITMA - Birmingham: MCS expõe MULTIFLOW SUPERIOR.

2007 ITMA - Monaco: MCS expõe FIRST HT

2011 ITMA - Barcelona: MCS expõe DYNAMICA HT

2015 ITMA - Milão: MCS expõe DYNAMICA SPRINT HT

2019 ITMA - Barcelona: MCS apresenta SOFTFLOW 18 HT, espone DYNAMICA SPRINT HT

2020: MCS projeta EUROFLOW SPORT

2023: ITMA Milão: MCS expõe CHRONOFLOW e SOFTFLOW 18 HT

MCS ROPE DYEING MACHINE HISTORY

1967 ITMA - Paris: MCS exhibits: the first low temperature jet model.

1979 ITMA - Hannover: MCS exhibits JET-HT and OVERFLOW MO/80 LT

1983 ITMA - Milan: MCS exhibits SOFTFLOW 82 HT and FLO-JET OF83 HT

1987 ITMA - Paris: MCS exhibits PANDORA HT

1995 ITMA - Milan: MCS exhibits: SOFTFLOW 100 HT, LONG HORN HT.

1999 ITMA - Paris: MCS exhibits: MULTIFLOW HT, SOFTFLOW 100 SUPERIOR HT

2000 : MCS presents the EUROFLOW LONG

2003 ITMA - Birmingham: MCS exhibits: MULTIFLOW SUPERIOR.

2007 ITMA - Monaco: MCS exhibits FIRST HT

2011 ITMA - Barcelona: MCS exhibits DYNAMICA HT

2015 ITMA - Milan: MCS exhibits DYNAMICA SPRINT HT

2019 ITMA - Barcelona: MCS presents SOFTFLOW 18 HT, exhibits DYNAMICA SPRINT HT

2020 : MCS design the EUROFLOW SPORT

2023 ITMA Milan: MCS exhibits CHRONOFLOW and SOFTFLOW 18 HT

SOFTFLOW-18

HT ROPE DYEING MACHINE



CARACTERÍSTICAS

RELAÇÃO DE BANHO MINIMA: 5 + FATOR DE ABSORÇÃO

BOMBA de circulação com motor de giros variáveis

SISTEMA de armazenamento de tecido horizontal de câmara dupla

INCLINAÇÃO de máquina pré-selecionável

INJETOR com fluxo variável

BOBINA INTERNA a grande diametro

FILTRO AUTOLIMPANTE colocado na descarga da bomba **SCSF**

REGULAGEM completamente automática com PC industrial touch screen

BUSCA COSTURA e controle circulação da peça e controle contínuo de nível

LAVAGEM MÚLTIPLA de paredes internas

SISTEMA DE RECIRCULAÇÃO banho e introdução para diluição sal

SISTEMA DEDESCARGA rápida do banho modelo **MQD**

SISTEMA INTERNO de enfiar para acomodação do tecido

POSSIBILIDADE de trabalhar em corda dupla com fibras leve e delicado

USO de maquinas geminadas

ASSISTÊNCIA REMOTA

MAIN FEATURES

Pump suction with variable speed motor

Fabric storage system with double tank

Preselectable machine inclination

Variable flow injector with electronic control

Big internal REEL

*Self-cleaning filter in main delivery pump model **SCSF***

Operation panel touch-screen

Continuous level control / seam detector / fabric run control

Multiple wash wall machine

System for the reduction liquor recycling and salt introduction

*Drain by main pump, mod. **MQD***

Internal plaiter for fabric deposit

Possibility to work in double rope

Twinning operation option

Remote support

SOFTFLOW-18

HT ROPE DYEING MACHINE



LR : 5 + FABRIC ABSORTION

CARACTERÍSTICAS

MST (Machine Side Tank): tanque de preparação do banho com sistema de controle nível por meio de sonda pneumática para reduzir os tempos mortos nas fases de enchimento do banho.

PAINEL OPERADOR: é possível utilizar qualquer micro disponível no mercado.

TANQUE DE PRODUTOS ADICIONAL: tanque de adição de produtos segundo completo com misturador, sonda pneumática, serpentina de aquecimento e recirculação do banho da máquina para facilitar as funções de mistura e dissolução dos produtos.

PH-METRO: medidor de pH composto por sonda de alta temperatura e instrumento de leitura instalado no painel elétrico.

MEDIDOR DE VAPOR: conectado ao microprocessador da máquina para registrar o consumo de vapor do ciclo.

MEDIDOR DE CONSUMO ELÉTRICO: conectado ao microprocessador da máquina para registrar o consumo de eletricidade do ciclo.

AR CONDICIONADO: ar condicionado no quadro elétrico com capacidade de refrigeração adequada com alimentação trifásica.

MAIN FEATURES

MST (machine side tank) is for liquor preparation; liquor is controlled and managed by a pneumatic probe in order to reduce down times by liquor fillings.

Operation panel: upon Customer's request it is always possible to install different brands of controllers.

Second add tank: second side-tank for products, complete with mixer, pneumatic probe, heating coil, liquor recycling to make product dissolving and mixing much easier.

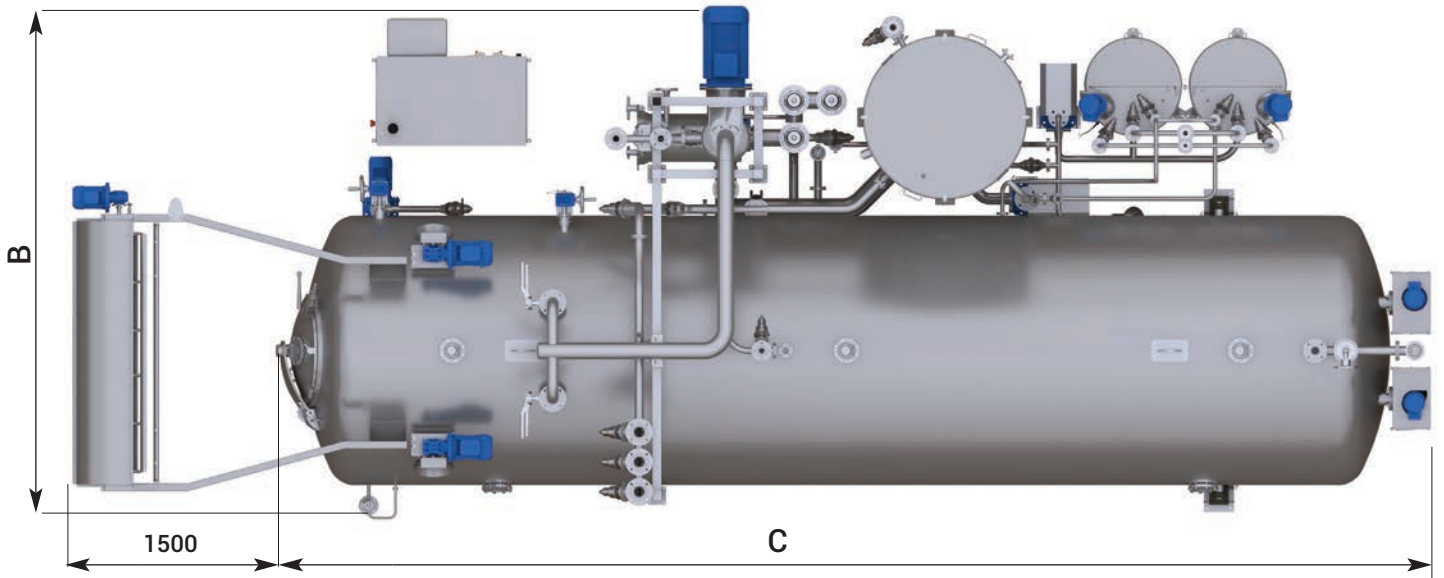
Ph-meter: composed of high temperature probe and reading instrument installed in the panel.

Steam flow meter: steam flow meter with system connected to the processor microprocessor for steam cycle.

Electric consumption meter: connected to the machine microprocessor for recording the electrical consumption of the cycle.

Conditioner: air conditioner with adequate cooling power with 3-phase power supply.

MODELS DATA

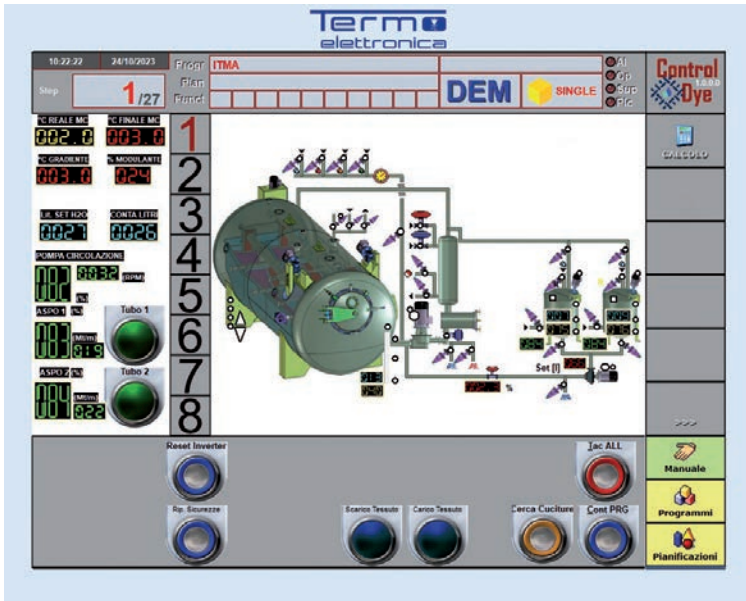


Model	Loading [Kg]	Rope n.	A [mm]	B [mm]	C [mm]
SF18-SAMPLE	30-50	1	3.400	2.900	4.500
SF18-1-100	100	1	3.400	2.900	6.000
SF18-1-150	150	1	3.400	2.900	7.500
SF18-2-100	200	2	3.500	3.600	6.100
SF18-2-150	300	2	3.500	3.600	7.600
SF18-3-100	300	3	4.100	4.200	6.300
SF18-3-150	450	3	4.100	4.200	7.800

MCS reserve the right to change technical data and specifications without prior notice

SF18-AUTOMATION

CTRL DYE



Panel de operador desenvolvido no windows para implementar de forma avançada todas as funções de diagnóstico, monitoramento e automação das máquinas de tingimento.

Pantalla toque 15", projetado especificamente para uso industrial: cada função é mais fácil e imediatamente acessível.

A pedido, você pode usar qualquer micro disponível no mercado.

Operatiron Panel developed in Windows room to improve all diagnostic functions, monitoring and automation of dyeing machines.

With Touch-Screen 15", purposely designed for industrial use, the access to functions is easy and immediate.

Upon Customer's request it is always possible to install different brands of controllers.

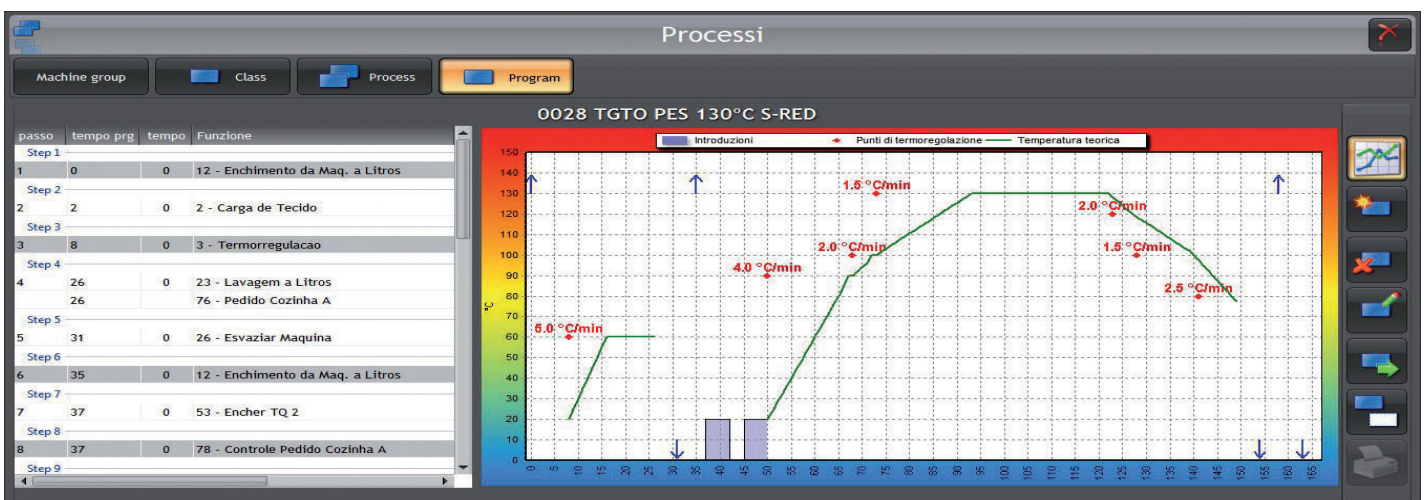
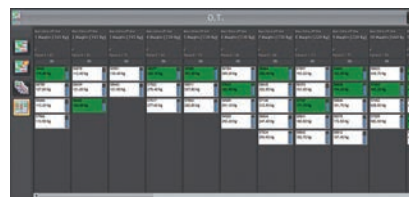
TEXMANAGER 4.0

Software de gestão de produção integrada que inclui:

- Gestão do pessoal
- Optimização dos recursos humanos
- Gestão de máquinas
- Gestão de departamentos de produção
- Gestão de armazéns

Integrated production management software including:

- Personnel Management*
- Optimization of human resources*
- Management of machinery*
- Software for integrated Production Management*
- Management of production departments*
- Warehouse management*



FEEL THE POWER OF WATER

DYEING & FINISHING MACHINERY



MCS

Bergamo | Italy | mcstextile.it



THINK BEFORE YOU PRINT