

MCS

DYEING & FINISHING MACHINERY



SOFTFLOW 18

HORIZONTAL HT & LT ROPE DYEING MACHINE



OUR HISTORY



2023 ITMA - Milan

MCS exhibits:

- Multiwash-M,
- Comby Jigger-C4,
- Chronoflow,
- Softflow-18

2019 ITMA - Barcellona

MCS exhibits:

- Lavaprint Next,
- Dynamica Sprint,
- Mini Jigger 98,

MCS presents:

- C4 Comby Jigger 143;
- Softflow 18-HT.

2017

MCS presents:

- Mini Jigger 98.

2015 ITMA - Milan

MCS exhibits:

- Multiwash,
- Dynamica Sprint,
- Starwash FS,
- Termopowder XP,
- Texmanager XP,
- Termochem XP.

2014 ITMA - Shanghai

MCS exhibits:

- Starwash Fast Scouring.

2013

MCS celebrate their 50 th anniversary

2011 ITMA - Barcellona

MCS exhibits:

- Dynamica,
- Star Wash,
- Comby Jigger,
- Supervisor Texmanager.

2009

MCS presents:

- Italica.

2008

MCS Re-design of all high and low temperature Jigger models.

2007 ITMA - Munich

MCS exhibits:

- Universal Dyeing,
- First Vento,
- Tumbler Mistral,
- VDA.

2005 IKME - Milan

MCS exhibits:

- Universal Dyeng, VDA.

2003 ITMA - Birmingham

MCS exhibits:

- Multiflow Superior,
- Ecoturbo Beam Dyeing Machine.

2000

MCS acquires 100% of Ter-moelettronica owner-ship.

1999 ITMA - Paris

MCS exhibits:

- Multiflow,
- Softflow 100 Evolution,
- Comby jigger electronic.

1995 ITMA - Milan

MCS exhibits:

- Softflow,
- Long Horn,
- Pumex

1991 ITMA - Hannover

MCS exhibits:

- Tornado Tumbler,
- Maxi & Mid jiggers,
- Lavaprint.

1987 ITMA - Paris

MCS exhibits: Pandora.

1983 ITMA - Milan

MCS exhibits:

- Tubular mercerizer MT26,
- Softflow-82 LT/HT,
- Flow/jet OF83,
- Comby Jigger HT,
- WR rope washing machine.

1980

Europea activity begins, group dyeing and resining company.

1979 ITMA - Hannover

MCS exhibits:

- Jet HT,
- Overflow MO/80 LT,
- MRS65.

1974

MCS begins the design and development of the open width lines.

1971 ITMA - Paris

MCS exhibits:

MCS exhibits the first low temperature jet model.

1968

Europizzi begins its activity

1967

MCS manufactures the first low temperature rope dyeing machine.

1964

MCS begins its activity.

1963

Gino Chiappini, Angelo Cagnazzo, founding MCS. Gino Chiappini is the Chairman of the Board.



SOFTFLOW-18

HT ROPE DYEING MACHINE

Softflow-18 es una máquina de teñido en cuerda de alta temperatura (máximo 144 °C).

Es una máquina de depósito horizontal, adecuada tanto para tejidos de punto como palnos con pesos variables incluso los más delicados, gracias al uso de sistemas de control avanzados. El cuerpo de la cámara puede contener de uno a tres recipientes diferentes con capacidad de carga variable dependiendo del modelo y la versión elegida.

Considerando un tejido de punto de CO 100% , de peso de 250 g/lin. m, las capacidades de llenado son las indicadas en el cuadro de la pag. 6

Todas las partes internas de la máquina en contacto con la tela se construyen con acero inoxidable certificado AISI 316/ AISI 316 L.

Softflow-18 está completamente diseñado y construido en MCS y probado en MCS Blue R&D

Softflow-18 is a high temperature rope dyeing machine (max 144 °F).

It is a horizontal depositing machine, suitable for both knitted and orthogonal fabrics with variable weights even the most delicate, thanks to the use of advanced control systems. The camera body can contain from one to three different vessels with variable charging capacity depending on the model and the version chosen.

Considering a cellulosic fibre mesh with a weight of 250 g/lin. m, the filling capacities are those indicated in the table on p. 6

All internal parts of the machine in contact with the fabric are constructed using AISI 316/AISI 316 L. certified stainless steel.

Softflow-18 is fully engineered and built in MCS and tested in the Blue R&D area of MCS.

STORIA DELLE MACHINE DA TINTURA IN CORDA MCS

- 1967 ITMA - Paris: MCS espone el primer modelo de Jet baja temperatura
- 1979 ITMA - Hannover: MCS espone JET-HT e OVERFLOW MO/80 LT
- 1983 ITMA - Milan: MCS espone SOFTFLOW 82 HT e FLO-JET OF83 HT
- 1987 ITMA - Paris: MCS espone PANDORA HT
- 1995 ITMA - Milan: MCS espone SOFTFLOW 100 HT, LONG HORN HT.
- 1999 ITMA - Paris: MCS espone MULTIFLOW HT, SOFTFLOW 100 SUPERIOR HT
- 2000: MCS diseña la EUROFLOW LONG
- 2003 ITMA - Birmingham: MCS espone MULTIFLOW SUPERIOR.
- 2007 ITMA - Monaco: MCS espone FIRST HT
- 2011 ITMA - Barcelona: MCS espone DYNAMICA HT
- 2015 ITMA - Milan: MCS espone DYNAMICA SPRINT HT
- 2019 ITMA - Barcelona: MCS presenta SOFTFLOW 18 HT, espone DYNAMICA SPRINT HT
- 2020: MCS diseña EUROFLOW SPORT
- 2023: ITMA Milan: MCS espone CHRONOFLOW e SOFTFLOW 18 HT

MCS ROPE DYEING MACHINE HISTORY

- 1967 ITMA - Paris: MCS exhibits: the first low temperature jet model.
- 1979 ITMA - Hannover: MCS exhibits JET-HT and OVERFLOW MO/80 LT
- 1983 ITMA - Milan: MCS exhibits SOFTFLOW 82 HT and FLO-JET OF83 HT
- 1987 ITMA - Paris: MCS exhibits PANDORA HT
- 1995 ITMA - Milan: MCS exhibits: SOFTFLOW 100 HT, LONG HORN HT.
- 1999 ITMA - Paris: MCS exhibits: MULTIFLOW HT, SOFTFLOW 100 SUPERIOR HT
- 2000 : MCS presents the EUROFLOW LONG
- 2003 ITMA - Birmingham: MCS exhibits: MULTIFLOW SUPERIOR.
- 2007 ITMA - Monaco: MCS exhibits FIRST HT
- 2011 ITMA - Barcelona: MCS exhibits DYNAMICA HT
- 2015 ITMA - Milan: MCS exhibits DYNAMICA SPRINT HT
- 2019 ITMA - Barcelona: MCS presents SOFTFLOW 18 HT, exhibits DYNAMICA SPRINT HT
- 2020 : MCS design the EUROFLOW SPORT
- 2023 ITMA Milan: MCS exhibits CHRONOFLOW and SOFTFLOW 18 HT

SOFTFLOW-18

HT ROPE DYEING MACHINE



CARACTERISTICAS

Bomba de circulación con motor a giros variables
Sistema de almacenamiento a doble cámara
Inclinación de la máquina preseleccionable
Tobera a caudal variable a comando electrónico
molinete interno de grande diámetro
Filtro principal Autolimpiante estático SCSF
Regulación completamente automática con PC industrial touch screen
Búsqueda de costuras, control circulación pieza control continuo de nivel
Lavado paredes múltiplo
Sistema de recirculación y introducción para dilución de la sal
Sistema descarga a baño rápido modelo MQD
Plegador en cada cuba para el depósito de la tela
Posibilidad de tintura con doble cuerda
Posibilidad de uso gemelo de más máquinas
Soporte remoto

MAIN FEATURES

Pump suction with variable speed motor
Fabric storage system with double tank
Preselectable machine inclination
Variable flow injector with electronic control
Big internal REEL
Self-cleaning filter in main delivery pump model SCSF
Operation panel touch-screen
Continuous level control / seam detector / fabric run control
Multiple wash wall machine
System for the reduction liquor recycling and salt introduction
Drain by main pump, mod. MQD
Internal plaiter for fabric deposit
Possibility to work in double rope
Twinning operation option
Remote support

SOFTFLOW-18

HT ROPE DYEING MACHINE



LR : 5 + FABRIC ABSORTION

CARACTERISTICAS

MST (Machine Side Tank): tanque de preparación baño con sistema de control de nivel mediante sonda neumática para reducir los tiempos muertos en las etapas de llenado máquina.

Panel de operador: es posible utilizar cualquier microprocesador disponible en el mercado.

Tanque de productos adicionales: Tanque de adición de productos doble con mezclador, sonda neumática, serpentín de calentamiento y recirculación del baño de la máquina para facilitar las funciones de mezcla y disolución de los productos.

Ph-metro: medidor de pH que consta de una sonda de alta temperatura y un instrumento de lectura instalado en el cuadro eléctrico.

Medidor de vapor: conectado al microprocesador de la máquina para registrar el consumo de vapor del ciclo.

Medidor de consumo eléctrico: conectado al microprocesador de la máquina para registrar el consumo eléctrico del ciclo.

Aire acondicionado: aire acondicionado en cuadro eléctrico con adecuada capacidad frigorífica, con alimentación trifásica.

MAIN FEATURES

MST (machine side tank) is for liquor preparation; liquor is controlled and managed by a pneumatic probe in order to reduce down times by liquor fillings.

Operation panel: upon Customer's request it is always possible to install different brands of controllers.

Second add tank: second side-tank for products, complete with mixer, pneumatic probe, heating coil, liquor recycling to make product dissolving and mixing much easier.

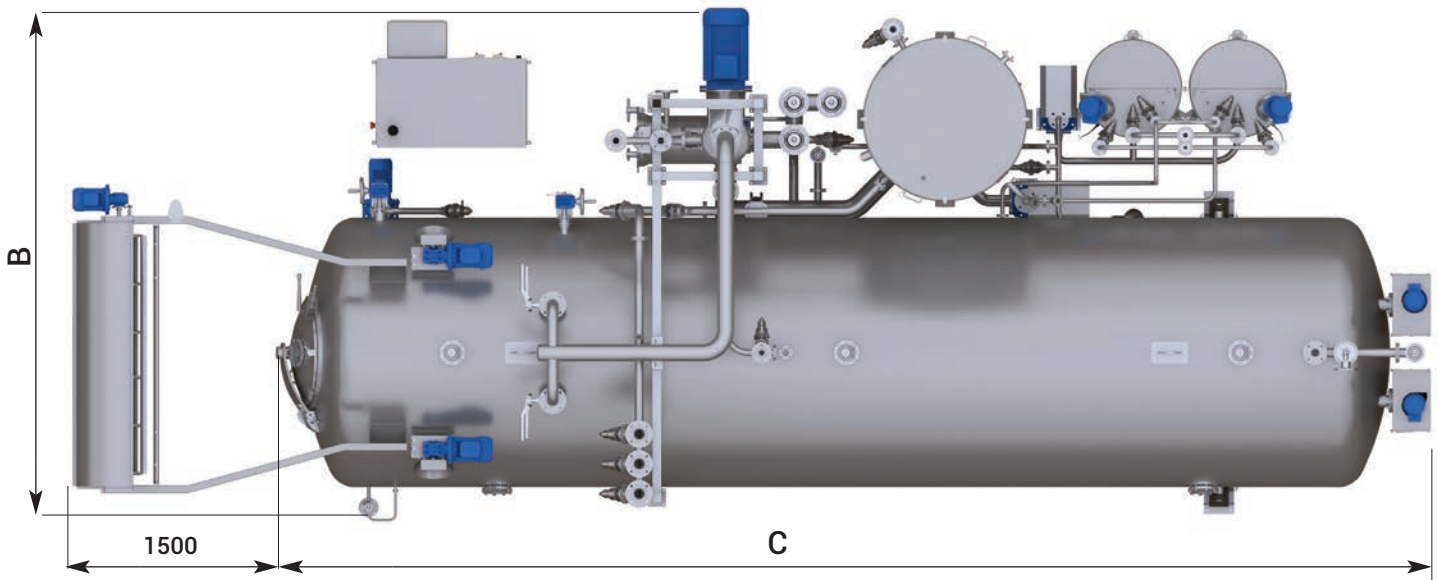
Ph-meter: composed of high temperature probe and reading instrument installed in the panel.

Steam flow meter: steam flow meter with system connected to the processor microprocessor for steam cycle.

Electric consumption meter: connected to the machine microprocessor for recording the electrical consumption of the cycle.

Conditioner: air conditioner with adequate cooling power with 3-phase power supply.

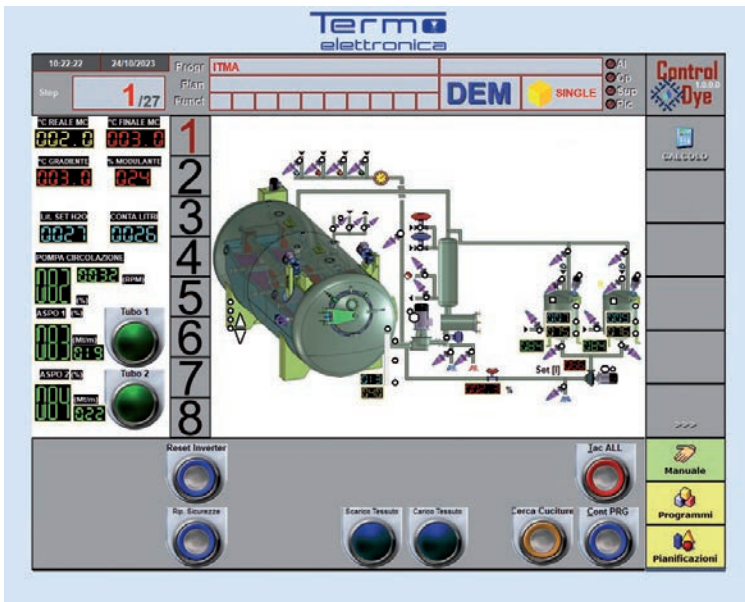
MODELS DATA



Model	Loading [Kg]	Rope n.	A [mm]	B [mm]	C [mm]
SF18-SAMPLE	30-50	1	3.400	2.900	4.500
SF18-1-100	100	1	3.400	2.900	6.000
SF18-1-150	150	1	3.400	2.900	7.500
SF18-2-100	200	2	3.500	3.600	6.100
SF18-2-150	300	2	3.500	3.600	7.600
SF18-3-100	300	3	4.100	4.200	6.300
SF18-3-150	450	3	4.100	4.200	7.800

MCS reserve the right to change technical data and specifications without prior notice

CTRL DYE



Panel de operador desarrollado en windows para implementar de forma avanzada todas las funciones de diagnóstico, monitoreo y automatización de las máquinas de teñido.

Pantalla táctil 15", diseñado específicamente para uso industrial: cada función resulta mas fácil e inmediato acceso.

A petición se puede utilizar cualquier micro disponible en el mercado.

Operatiron Panel developed in Windows room to improve all diagnostic functions, monitoring and automation of dyeing machines.

With Touch-Screen 15", purposely designed for industrial use, the access to functions is easy and immediate.

Upon Customer's request it is always possible to install different brands of controllers.

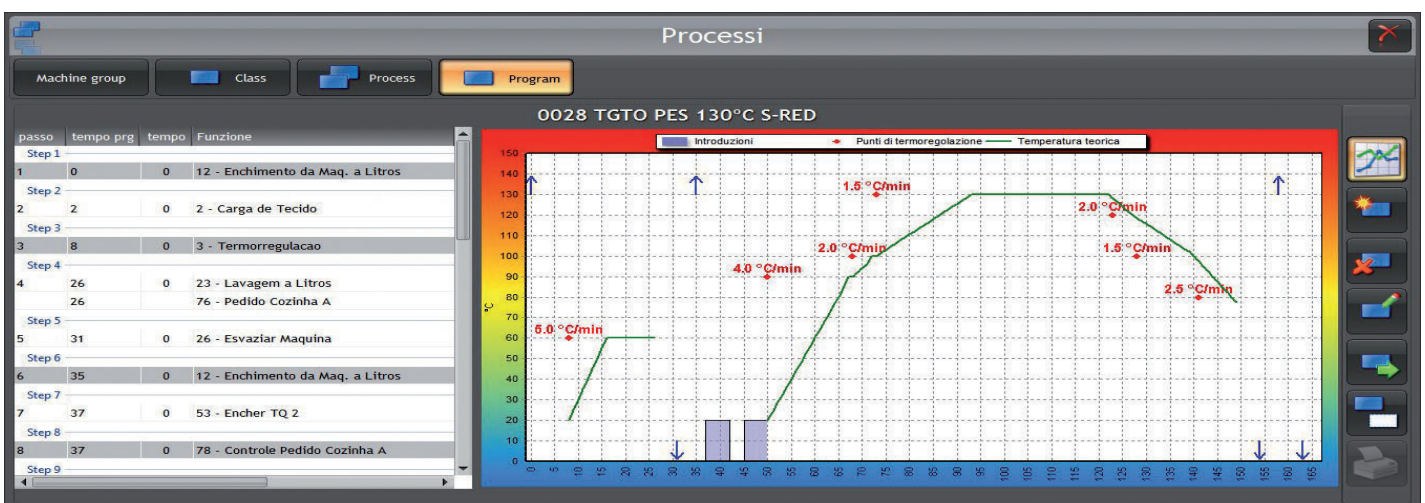
TEXMANAGER 4.0

Software de gestión de producción integrada que incluye:

- Gestión de personal
- Optimización de los recursos humanos
- Gestión de maquinaria
- Gerencia departamentos de producción
- Gestione almacén

Integrated production management software including:

- Personnel Management*
- Optimization of human resources*
- Management of machinery*
- Software for integrated Production Management*
- Management of production departments*
- Warehouse management*



FEEL THE POWER OF WATER

DYEING & FINISHING MACHINERY



MCS

Bergamo | Italy | mcstextile.it



THINK BEFORE YOU PRINT